

SCS KEYLESS ENTRY
For
RECREATIONAL VEHICLES

INSTALLATION AND SERVICE GUIDE

PART 1: CONTROL MODULE AND TRANSMITTER

PART 2: KEYPAD

FOR SERVICE OR INSTALLATION ASSISTANCE CALL

1-800-451-9245

APRIL 2008

PART 1

CONTROL MODULE AND TRANSMITTER

ELECTRONIC CONTROL MODULE

The electronics control Module should be mounted in the driver's side lower front compartment or left of the steering column under the dash. The Module should be secured with screws to insure that the Module will not rattle or come loose. Route the antenna as straight as possible. Locate the mating electrical wires of the motorhome wire harness and connect to the electronic control Module wire harness.

NOTE: Antenna placement is very important for Transmitter range. Ensure the antenna is stretched out with the last 6 inches straight. Keep the antenna away from metal as much as possible.

PROGRAMMING THE TRANSMITTER

After the Module is completely installed, it is necessary to program the Transmitter(s) into the 4 memory locations of the Module.

1. **Press the YELLOW programming button on the Module for four seconds then release. The Module should then make a light clicking sound.**

Note: The YELLOW programming button is located under the Module label thru a 7/8" hole in the Module housing. If the label has not yet been broken, carefully punch a hole thru the label to access the YELLOW programming button.

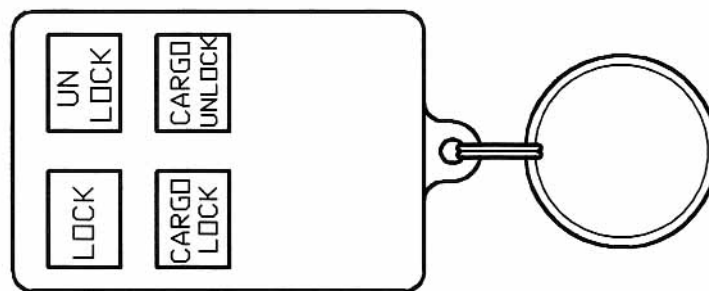
2. **Press the LOCK button only, on the Transmitter. Repeat this for up to 4 Transmitters.**

Note: The Module has 4 memory locations that must receive a Transmitter signal to each. If you have less than 4 Transmitters, repeat the programming procedure on a Transmitter more than once so that the Module receives a code for each of it's 4 memory locations.

Note: Be sure to press ONLY the LOCK button on the Transmitter. Pressing any other button will cause the Transmitter to operate erratically.

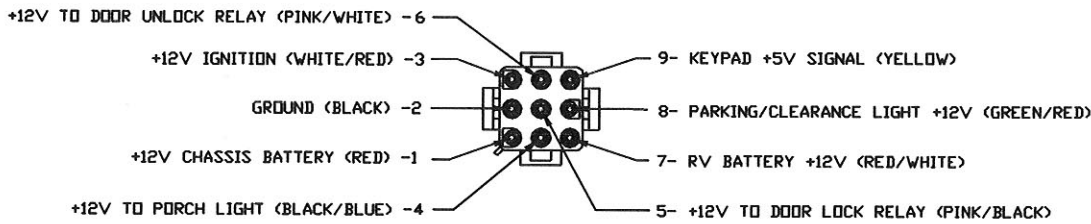
3. **When 4 LOCK codes have been programmed into the Module, cycle the ignition key ON and then OFF.**
4. **Press the LOCK and UNLOCK buttons on each Transmitter to ensure that each Transmitter operates properly.**

TRANSMITTER

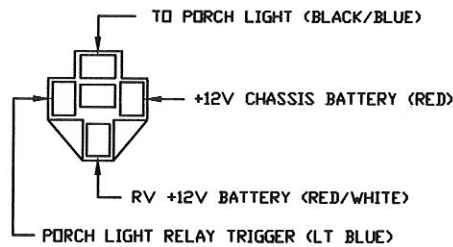


MODULE ELECTRICAL CONNECTORS

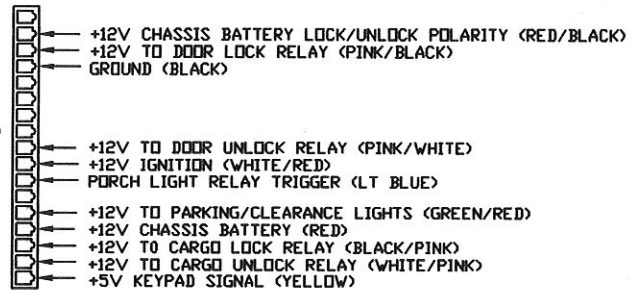
MODULE HARNESS CONNECTOR
AMP 1-480706-0



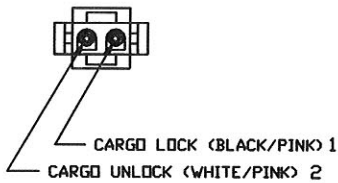
PORCH LIGHT RELAY CONNECTOR
JULIANA BR05-WH



MODULE BOARD CONNECTOR
AMP 1-640250-7



CARGO LOCK CONNECTOR
AMP 1-480706-0



TRANSMITTER TEST

Note: When performing the following test, it is necessary to check all electrical connections for correct terminal contact as well as wire harness continuity. Also check that the motorhome battery disconnect switch is ON and that the motorhome power lock switches work before performing this test.

Press a programmed Transmitter LOCK button. Does the system respond by flashing the clearance lights and locking the door?

YES

NO

Do the clearance lights flash, but the door does not LOCK?

YES

NO

Check for +12 V power to the receiver, pin # 1. If +12 V check/replace the Transmitter battery, then reprogram the Transmitter. If still NO, replace the Transmitter. If still NO, replace the Module.

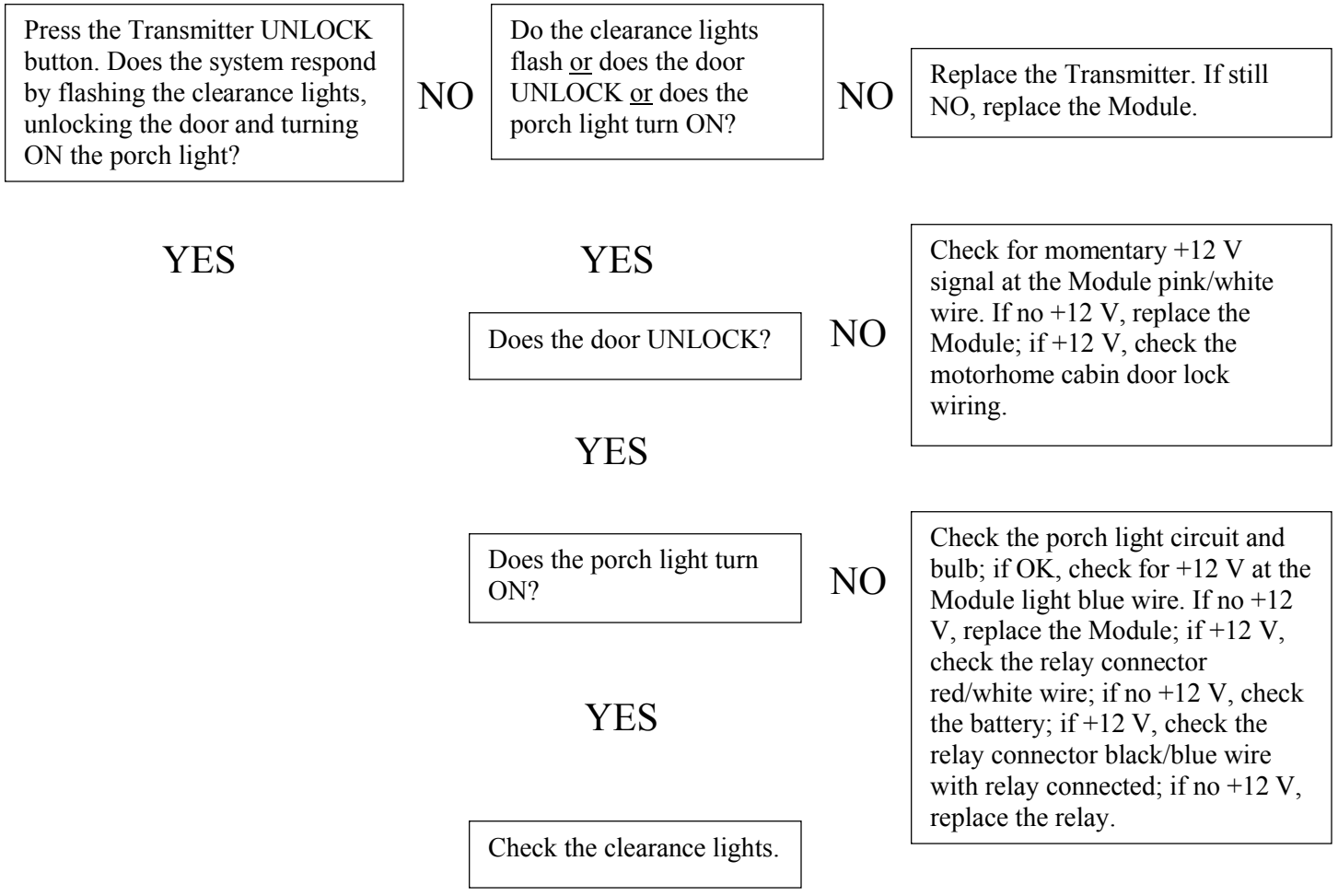
Check for momentary +12 V at the Module pink/black wire, pin #5.

YES

NO

Replace Module.

Check the motorhome door lock wiring.



If the Keyless Entry System is equipped with cargo bay door LOCK/UNLOCK feature, repeat the above procedure.
Note: There is no porch light feature with cargo bay door UNLOCK.

TRANSMITTER PASSED

PART 2

KEYPAD

KEYPAD INSTALLATION

The Keypad is to be installed in the opening cut into the coach sidewall near the entrance door.

1. Ensure the rubber gasket is installed on the backside of the Keypad.
2. Find the 3-pin electrical harness connector inside the opening and connect to the 3-pin connector on the backside of the Keypad.
3. Position the Keypad in the opening with the numbers right side up.
4. Secure the Keypad to the coach using the 2 screws provided.
5. Slide the Keypad Covers over each end of the Keypad, pushing inward until the Covers snap in-place concealing the mounting screws.

KEYPAD PROGRAMMING

The Keypad is programmed at the factory with a permanent entry code being the last 4 digits of the Keypad serial number. To reprogram the Keypad to your personal entry code, perform the following procedure.

1. Enter the last 4 digits of the serial number by pressing the appropriate numbers on the Keypad. An audible response will beep after pressing any number on the Keypad.
2. Within 5 seconds, press and hold the 1/2 button on the Keypad until the Keyless Entry System responds with LOCK-UNLOCK (about 2 seconds).
3. Enter your personal 4-6 digit entry code. (Each digit must be pressed within 5 seconds of the last audible beep.)
4. When completed, the Keyless Entry System will again respond with LOCK-UNLOCK to confirm that your personal entry code has been programmed.

FORGOTTEN PERSONAL ENTRY CODE

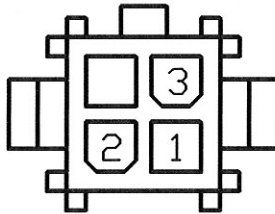
If for some reason the personal entry code has been forgotten, the Keypad can be reprogrammed with a new personal entry code by entering the last four digits of the Keypad serial number. Earlier versions of the Keypad did not have the audible response beep feature. To reprogram the Keypad that does not have the audible response, the following procedure must be used.

1. Press and hold down the YELLOW programming button on the Keyless Entry System module and at the same time press and hold down the 1/2 button on the Keypad until the Keypad button lights start flashing (about 5 seconds). This will cause the Keypad to forget the previous personal entry code and remember the factory default code (15371).
2. Cycle the ignition key to ON then back to OFF.
3. Enter the factory default code (15371) on the Keypad.
4. Within 5 seconds, press and hold the 1/2 button on the Keypad until the Keyless Entry System responds with LOCK-UNLOCK (about 2 seconds).
5. Enter your new personal 4-6 digit entry code. (Each digit must be entered within 5 seconds of the last digit entered.)
6. When completed, the keyless Entry System will again respond with LOCK-UNLOCK to confirm that your personal entry code has been programmed.

KEYPAD ELECTRICAL CONNECTOR

CONNECTOR WIRING

MOLEX MINI-FIT #39-01-2041
(VIEWED FROM MATING END)



1. +12 VDC (RED)
2. GROUND (BLACK)
3. +5V SIGNAL FROM MODULE (YELLOW)

KEYPAD TEST

Note: When performing the following test, it is necessary to check all electrical connections for correct terminal contact as well as wire harness continuity. Ensure that the motorhome battery disconnect switch is ON, and that the Keyless Entry System works correctly before performing this test. The signal on the yellow wire is a +5V sensing signal from the Module to the Keypad.

Press any Keypad button; does the Keypad illuminate?

NO

Check for +12 V at Keypad red wire and ground at black wire. If OK, replace the Keypad.

YES

Enter the personal entry code then press the 3/4 button, does the cabin door UNLOCK?

NO

Check for an interruption of +5 V signal at the Module harness yellow wire, if no +5 V with interruption, replace the Keypad; if interruption, check for momentary +12 V signal at the Module harness pink/white wire; if no +12 V, replace the Module, if +12 V, check the motorhome door lock wiring.

YES

Do the clearance lights flash twice?

NO

Check for a +12 V signal at the Module harness green/red wire. If no +12 V, replace the Module; if +12 V, check the clearance light circuit.

YES

Does the porch light turn ON?

NO

Check the porch light circuit and bulb; if OK, check for +12 V signal at the Module harness light blue wire; if no +12 V, replace the Module; if +12 V, check the relay connector red/white wire; if no +12 V, check the battery; if signal, check the relay

YES

Enter the personal entry code then press the 5/6 button, do the cargo bay doors UNLOCK?

NO

Check for an interruption of the +5 V signal at the Module harness yellow wire, if no +5 V with interruption, replace the Keypad; if interruption, check the Module harness white/pink wire; if no momentary +12 V, replace the Module; if +12 V, check the motorhome cargo bay door lock wiring.

YES

Do the clearance lights flash twice?

NO

(see third step above)

YES

Press the 7/8 and 9/0 buttons at the same time, does the cabin door LOCK?

NO

Check for an interruption in the +5 V signal at the Module harness yellow wire; if no +5 V with interruption, replace the Keypad; if interruption, check the Module harness pink/black wire; if no momentary +12 V, replace the Module; if +12 V, check the motorhome cabin door lock wiring.

YES

Do the cargo bay doors LOCK?

NO

Check for momentary +12 V at the Module harness black/pink wire; if no +12 V, replace the Module; if +12 V, check the motorhome cargo bay door lock wiring.

YES

Do the clearance lights flash once?

NO

(see third step above)

YES

KEYPAD PASSED TEST